A large, detailed image of the Elliott RowControl FlexSeeder drive system, showing a complex metal assembly with various ports and a curved hose.

Rugged and reliable,  
a high-performance drive system  
that is easily fit for precision performance.

Designed to fit a variety of John Deere planter platforms.

RowControl FlexSeeder™ allows dealers  
and farmers the ability to upgrade  
their planting systems with  
state-of-the-art drive technology.

## **Elliott RowControl Installation Manual**

## RowControl (Kit Number 14778) Install Guide

- Lower the planter into the planting position to ensure you have the maximum amount of room to replace the Pro-Drive cable with the RowControl Flexseeder.
- If the planter has long parallel arms with pneumatic down forces, the “V” bracket on the bottom of the down force has to be loosened and rotated 180° as shown in Figure 1.

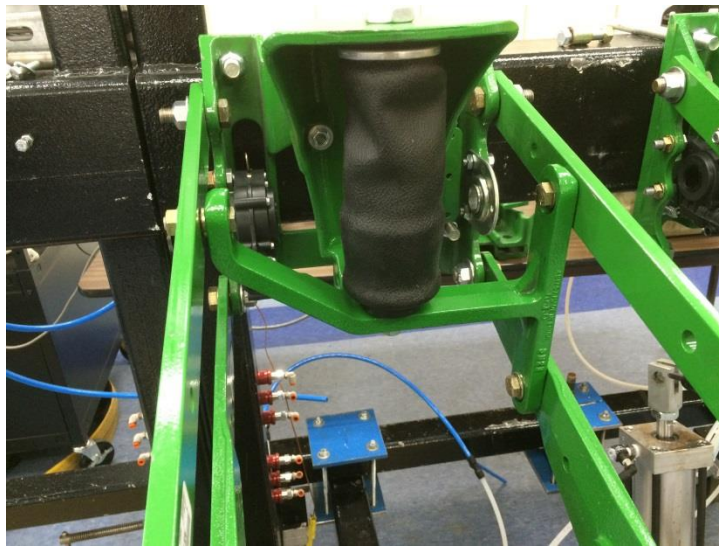


Figure 1, Long Row Down Force After Mount Adjustment

- Once the planter is set to the planting position, remove the black pin that holds the cable drive shaft into the hex bar gear box (see Figure 2).

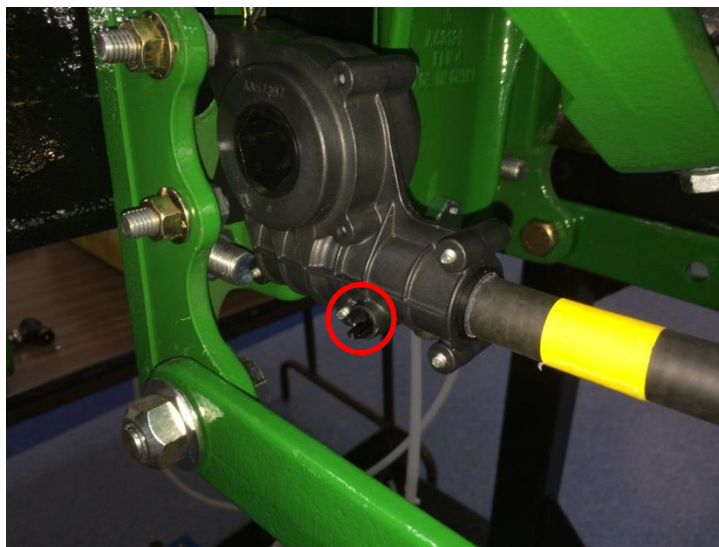


Figure 2, Remove the Black Pin in the Hex Bar Gear Box

- Once the pin is removed, pull out the cable drive from the hex bar gear box.

- On the seed meter gear box, turn the twist lock such that the unlock symbol is facing up (see Figure 3).

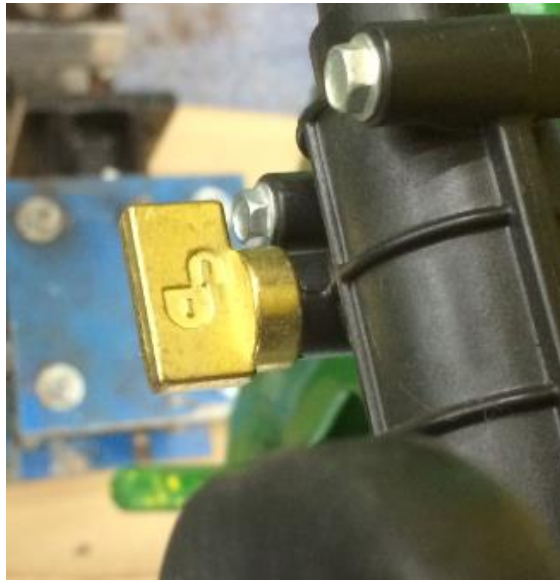


Figure 3, Twist lock in the Unlock Position

- Remove the cable drive from the seed meter gear box.
- Before installing the clutch, make sure it is disconnected from the flex shaft.
- Once the flex shaft has been removed, insert the long clutch nose into the hex bar gear box.
- Align the groove in the clutch nose such that the pin can be reinserted (see Figure 4).



Figure 4, Clutch Nose Groove

- Once the clutch is connected to the hex bar gear box, re-insert the pin into the gear box.
- Pull the wire/Deutsch connector through the hole on the right side of the bracket (see Figure 5).

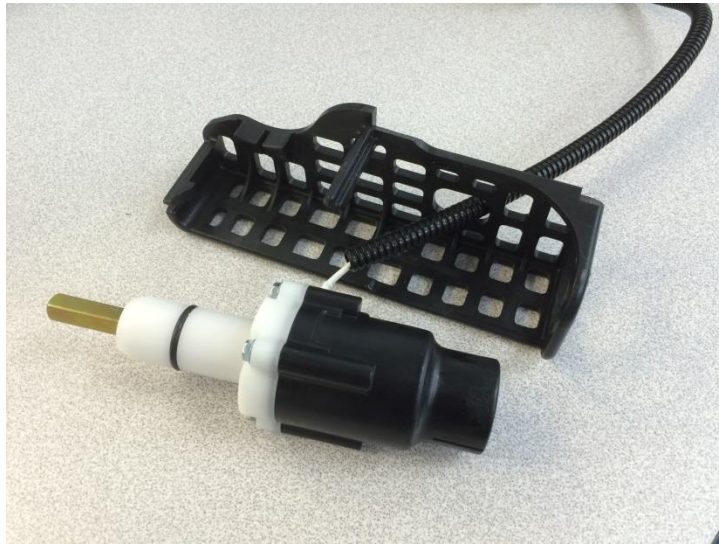


Figure 5, Slot in the Support Bracket for the Wire

- Slide the bracket such that the hole at the end slides over the clutch.
- Once the end of the bracket has been inserted over the clutch, rotate the bracket counter clockwise, until both clips snap onto the gear box (see Figure 6-8).



Figure 6, Support Bracket Left Side View



Figure 7, Support Bracket Center View

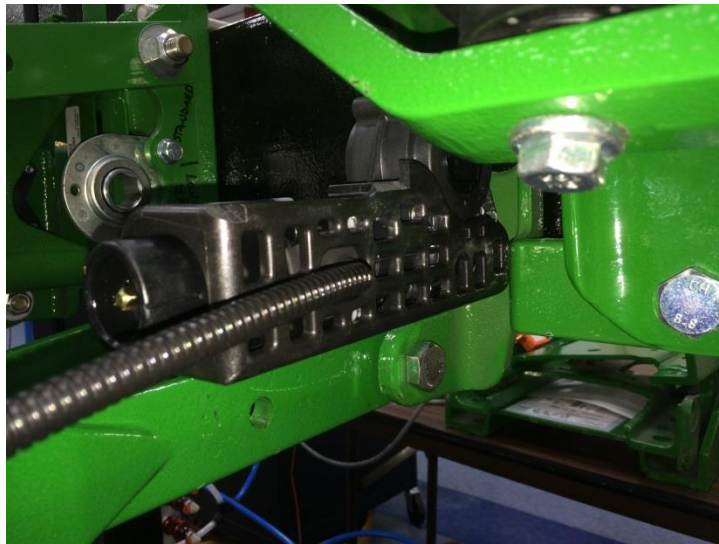


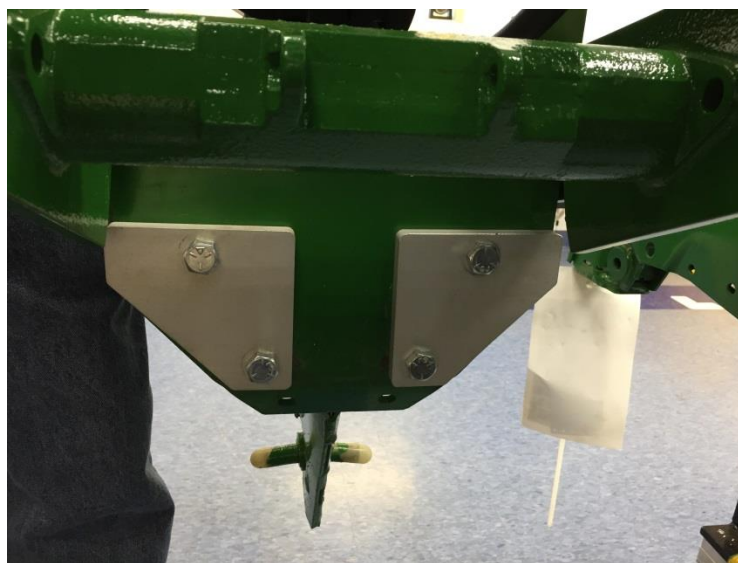
Figure 8, Support Bracket Right Side View

- After the bracket has been installed, reconnect the flex shaft to the clutch.
- Insert the end of the flex shaft into the seed meter gear box.
- Turn the seed meter to align the male and female squares.
- Once the flex shaft has been properly aligned in the seed meter gear box, turn the twist lock such that the lock symbol is facing up.



Finished Gearbox and Shaft Install

- Installation of Row Stops – The installation kit includes mechanical stops that will restrict the movement of the planter. It is done to avoid potentially harmful contact with the system components.
- Remove the row cleaners from the row unit. Reinstall with the mechanical stops in the position shown.





Row stops installed.

- Connect clutch wire to control system harness. Insure wire is routed so there is no interference throughout full planter operation.
- Reinstall Hex Bar being careful not to damage the Hex Bar Gear Box during installation.