

RowControl™



RowControl+™



SurfaceDrive™



GroundControl™ & GroundControl™ II



FlexSeeder™



INNOVATIVE FLEXIBLE SHAFT SOLUTIONS

PLANT SMARTER. GROW YOUR PROFITS.





PRECISE, MORE PROFITABLE PLANTING

Agriculture Solutions



elliott manufacturing

elliottmfg.com

Catalog Contents

RowControl™ Drive System	4
SurfaceDrive™ Drive System	6
GroundControl™ Drive System	8
GroundControl™ II Planter Drive System	10
FlexSeeder™ Drive System	12
About Elliott Mfg and Locations	15

A farmer's day can be long and challenging.

At Elliott Manufacturing, we look for smart and innovative flexible shaft solutions to make that time in the field a little easier, more efficient and more profitable.

Since 2003, Elliott has produced more than 2 million flexible drive assemblies. Our flexible drive and control shaft products fit most planters on the market today, bringing enhanced performance to original equipment machinery and offering simple and dependable aftermarket upgrades for an ongoing return on your investment.



Agricultural environments are harsh, which is why all of Elliott's mechanical solutions are environmentally sealed, ensuring years of maintenance-free use and reliability. Our flexible planting products provide mechanical advantages without the need for additional power sources. If your planter has a toolbar, you already have all the power you need to drive any of our precision planting products.

We invite you to learn more about our cost-effective agricultural technology today.

The following pages offer detail on our RowControl, SurfaceDrive, GroundControl, Ground Control II and FlexSeeder drive systems. For immediate assistance or to place an order, contact AgExpress Electronics, Elliott's exclusive North American distributor for this product, by phone at 515-446-3400 or by email at sales@agexpress.com.

Elliott Has A History of Improving How Farmers Plant



2003

Began production of agricultural seeders for John Deere® equipment.



2013

Added production of agricultural seeders for Case IH and AGCO.



2016

Launched RowControl and SurfaceDrive products for the agricultural aftermarket.



EASILY UPGRADE TO MORE CONTROL

RowControl Drive System

Return on investment gets that much easier when it's an investment you already own.

If you have a John Deere planter with Pro-Shaft™ drives and want to add an inline clutch, you need Elliott's RowControl product, our easy-to-install solution for individual on/off row control.

Elliott Manufacturing RowControl and RowControl+ Systems

- Adds individual on/off row control to your current system for maximum productivity
- Easy to install, allowing you to get to working quickly
- Maintenance free for uninterrupted performance
- No additional row unit modifications required, just plug and plant
- Easily integrates via existing Climate Fieldview™ II wiring harness for smooth operation
- Interfaces with standard planter control software, for simple setup

A RowControl product from Elliott Manufacturing lets you easily add an in-line clutch
to your original John Deere Pro-Shaft Drive Seed Meter.



RowControl Drive System

If you run John Deere Pro-Shaft Drives, you know the power of flexible shafts. With our RowControl product, you can extend the life of your planter, while adding individual on/off row control using our proprietary clutch technology.

RowControl+ Drive System

Use Elliott's RowControl+ solution if you're looking to upgrade from chains and sprockets. You can choose RowControl+ with or without a clutch for a long-lasting, maintenance-free solution to your planter upgrade.

RowControl Assembly

- 1 .375 FLEXIBLE SHAFT ASSEMBLY
- 2 REVERSE LOGIC CLUTCH ASSEMBLY, RH W/DEUTSCH RECEPTACLE
- 3 JD 7200/7300/1770 ROW UNIT STOP
- 4 SCREW, HEX HD CAP 1/2-13 X 2
- 5 LOCK NUT, ELASTIC STOP, 1/2-13 THD
- 6 CLUTCH BRACKET



John Deere | Planter Model: Pro-Shaft Drive | Description: RowControl, Elliott Clutch + Flex Cable

Elliott PN	Deere PN	Elliott PN	Deere PN	Elliott PN	Deere PN	Elliott PN	Deere PN
15067-115	AA56140	15067-101	AA57527	15067-107	AA57581	14778-130	AA61273
15067-111	AA56141	15067-123	AA57539	14778-108	AA57582	15067-125	AA61274
14778-112	AA56142	14778-124	AA57540	15067-113	AA57583	15067-127	AA61275
15067-119	AA56143	14778-106	AA57542	14778-114	AA57584	15067-129	AA61276
15067-121	AA56144	15067-103	AA57543	14778-116	AA61269	15067-132	AA62436
14778-120	AA56145	14778-104	AA57544	15067-131	AA61270	15067-133	AA62437
14778-122	AA57524	14778-118	AA57578	14778-126	AA61271	14778-134	DQ58915
14778-102	AA57526	14778-110	AA57580	14778-128	AA61272	14778-139	AKK11424

With a RowControl drive system, you can realize a substantial seed savings versus overplanting.

HIGHER YIELDS AT A LOWER COST

SurfaceDrive Drive System

Save seeds, time and operating costs with our smart and versatile, maintenance-free drive solution.

If you're using Precision Planting's vSet® seed meter, you need a SurfaceDrive system, Elliott's mechanical drive that uses the power from your own toolbar to drive the meter. It easily attaches to your existing vSet seed meter for exceptional accuracy and reliability, and our SurfaceDrive solution offers on/off row control using Elliott's proprietary clutch technology.

Elliott Manufacturing SurfaceDrive System

- Available with or without a clutch for individual row control
- Easy to install, allowing you to get to working quickly
- Maintenance free for uninterrupted performance
- Meets IP-66 standards for added safety
- Compatible with any 3/4 or 7/8 in. toolbar for easy integration
- Complete seed disk changes without tools removing gearbox, saving your time and resources



vSet Seed Meter not included.

A SurfaceDrive system from Elliott Manufacturing is the smart and simple
mechanical alternative to an electric drive.

SurfaceDrive Clutched Assembly

- 1 FLEXIBLE SHAFT ASSEMBLY, SANTOPRENE COVERED
- 2 REVERSE LOGIC CLUTCH ASSEMBLY, RH W/DEUTSCH RECEPTACLE
- 3 JD 7200/7300/1770 ROW UNIT STOP
- 4 SCREW, HEX HD CAP 1/2-13 X 2
- 5 LOCK NUT, ELASTIC STOP, 1/2-13 THD
- 6 CLUTCH BRACKET
- 7 vSET 2 GEAR BOX ASSEMBLY FOR RH CORE



AGCO | Planter Model: 8000/9000 | Description: Varies

Elliott PN	Description
14972-102	SurfaceDrive Assy - vSet 2 w/Clutch
14972-104	SurfaceDrive Assy - vSet Classic - w/Clutch

Planter Compatibility*

AGCO: 8000/9000 Series
Case IH: 1200 Series
John Deere: 17xx, 7000, 7100, 7200, 7300,
DB-Series
Kinze: 3000 Series

*Other configurations are available,
some restrictions apply.

Requirements

- vSet Seed Meter
- Hopper Kit from Precision Planting
- Toolbar driven planter (3/4" or 7/8")

Case IH | Planter Model: 1200 Series | Description: Varies

Elliott PN	Description
14575-100	SurfaceDrive Assy - vSet 2- w/Clutch, 14" Cable, Overall Length 30"
14575-101	SurfaceDrive Assy - vSet 2- w/Clutch, 20" Cable, Overall Length 36"
14575-102	SurfaceDrive Assy - vSet 2- w/Clutch, 24" Cable, Overall Length 40"
14970-100	SurfaceDrive Assy - vSet 2- w/o Clutch, 14" Cable, Overall Length 30"
14970-101	SurfaceDrive Assy - vSet 2- w/o Clutch, 20" Cable, Overall Length 36"
14970-102	SurfaceDrive Assy - vSet 2- w/o Clutch, 24" Cable, Overall Length 40"


John Deere | Planter Model: Pro-Shaft Drive | Description: SurfaceDrive - vSet 2 for JD ProDrive w/Clutch

Elliott PN	Deere PN	Elliott PN	Deere PN	Elliott PN	Deere PN	Elliott PN	Deere PN
15104-115	AA56140	15104-107	AA57581	14639-115	AA56140	14639-107	AA57581
15104-111	AA56141	15104-108	AA57582	14639-111	AA56141	14639-108	AA57582
15104-112	AA56142	15104-113	AA57583	14639-112	AA56142	14639-113	AA57583
15104-119	AA56143	15104-114	AA57584	14639-119	AA56143	14639-114	AA57584
15104-121	AA56144	15104-116	AA61269	14639-121	AA56144	14639-116	AA61269
15104-120	AA56145	15104-131	AA61270	14639-120	AA56145	14639-131	AA61270
15104-122	AA57524	15104-126	AA61271	14639-122	AA57524	14639-126	AA61271
15104-102	AA57526	15104-128	AA61272	14639-102	AA57526	14639-128	AA61272
15104-101	AA57527	15104-130	AA61273	14639-101	AA57527	14639-130	AA61273
15104-123	AA57539	15104-125	AA61274	14639-123	AA57539	14639-125	AA61274
15104-124	AA57540	15104-127	AA61275	14639-124	AA57540	14639-127	AA61275
15104-106	AA57542	15104-129	AA61276	14639-106	AA57542	14639-129	AA61276
15104-103	AA57543	15104-132	AA62436	14639-103	AA57543	14639-132	AA62436
15104-104	AA57544	15104-133	AA62437	14639-104	AA57544	14639-133	AA62437
15104-118	AA57578	15104-134	DQ58915	14639-118	AA57578	14639-134	DQ58915
15104-110	AA57580	15104-139	AKK11424	14639-110	AA57580	14639-139	AKK11424

Kinze | Planter Model: 3000 | Description: Varies

Elliott PN	Description
14570-26SR-514	SurfaceDrive Assy - vSet 2 w/Clutch
14572-26SR-514	SurfaceDrive Assy - vSet 2 w/o Clutch
14570-26SR-598	SurfaceDrive Assy - vSet 2 w/Clutch for Setback Rows
14572-26SR-598	SurfaceDrive Assy - vSet 2 w/o Clutch for Setback Rows

With Elliott's SurfaceDrive solution, you can save money
and power draw with results on par with electric drives.



EXTENDS THE LIFE OF YOUR INVESTMENT

GroundControl Drive System

Manage input cost, increase yields and improve your harvest capabilities.

Just because John Deere no longer offers spare parts for its RowCommand™ product doesn't mean you can't continue to benefit from your investment. Elliott's GroundControl system is a better, fully compatible row control replacement for Pro-Shaft drive planters. Our rugged GroundControl design includes enhanced, longer-lasting features to help prevent wasted seeds and produce more even field edges.

Elliott Manufacturing GroundControl System

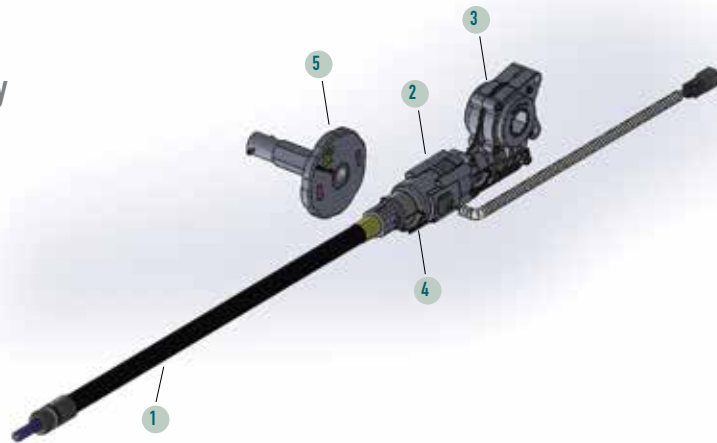
- Non-indexing clutch offers better and faster control of seed meter
- Reinforced knob with durable aluminum interface and self-locking screws lasts longer
- Easy to install, allowing you to get working quickly
- Maintenance-free for uninterrupted performance
- Smart placement of clutch on the seed meter side frees up valuable toolbar space for aftermarket down-force options

A GroundControl drive system from Elliott Manufacturing is your simple and better replacement for John Deere RowCommand.



GroundControl Clutched Assembly

- 1 FLEXIBLE SHAFT ASSEMBLY
- 2 SEEDMETER CLUTCH ASSEMBLY
- 3 GEARBOX ASSEMBLY
- 4 SEEDMETER CLUTCH BRACKET
- 5 KNOB ASSEMBLY, SEEDMETER CLUTCH



A Better Knob Saves You Time and Money

Elliott's knob is reinforced with self-locking set screws to improve durability. Your original plastic knob features spring fingers that snap into the seed meter shaft and easily break. Our seed meter interface is reinforced aluminum.

John Deere | Planter Model: Pro-Shaft Drive | Description: GroundControl, Seed Meter Clutch Assembly

Elliott PN	Deere PN	Elliott PN	Deere PN	Elliott PN	Deere PN	Elliott PN	Deere PN
15132-115	AA56140	15132-101	AA57527	15132-107	AA57581	15132-130	AA61273
15132-111	AA56141	15132-123	AA57539	15132-108	AA57582	15132-125	AA61274
15132-112	AA56142	15132-124	AA57540	15132-113	AA57583	15132-127	AA61275
15132-119	AA56143	15132-106	AA57542	15132-114	AA57584	15132-129	AA61276
15132-121	AA56144	15132-103	AA57543	15132-116	AA61269	15132-132	AA62436
15132-120	AA56145	15132-104	AA57544	15132-131	AA61270	15132-133	AA62437
15132-122	AA57524	15132-118	AA57578	15132-126	AA61271		
15132-102	AA57526	15132-110	AA57580	15132-128	AA61272		

With a GroundControl drive solution, you can easily replace your RowCommand system and reap better results.



TAKE CONTROL OF YOUR FIELD AND YOUR INVESTMENT

GroundControl II Planter Drive System

Control input cost, even field edges, maximize crop yields,
and cultivate precision farming better than ever before.

Elliott Manufacturing puts you in control with our new GroundControl II system, a direct plug-and-play drop in for John Deere ProSeries™ row units using RowCommand. That means you can continue to benefit from your equipment investment for years to come. Our new GroundControl II system is a better, fully compatible, row control replacement for all Pro-Shaft driven row units, including the Pro-Series™ XP and MaxEmerge™ XP planters. Plus, Elliott's innovative design locates the clutch inside the seed meter gearbox, so you can use your existing flexible shafts for fast, easy installation. Other features include:

- Non-indexing clutch offers optimal control of your seed meter to eliminate over-seeding, reduce seed waste, save money and enhance crop output
- Option for manual or John Deere Section Control clutch engagement to pause seed distribution
- Reinforced knob with durable aluminum interface and self-locking screws stands up to harsh environments for maximum performance and life
- Easy to install for quick changeover
- Maintenance free for uninterrupted performance
- Reverse-logic clutch draws 283mA of current only when slipping, so no major electrical enhancements are needed on your tractor
- Sealed design meets IP-66 standards for water and dust, eliminating failure potential due to contamination



P/N 15464-100

The Elliott GroundControl II planter drive system is the simple, affordable and direct replacement for John Deere RowCommand.



Elliott's GroundControl II is a direct replacement for John Deere RowCommand systems on all Pro-Shaft drive planters. This smart, affordable solution will give you all the benefits you expect, plus significant budget savings.

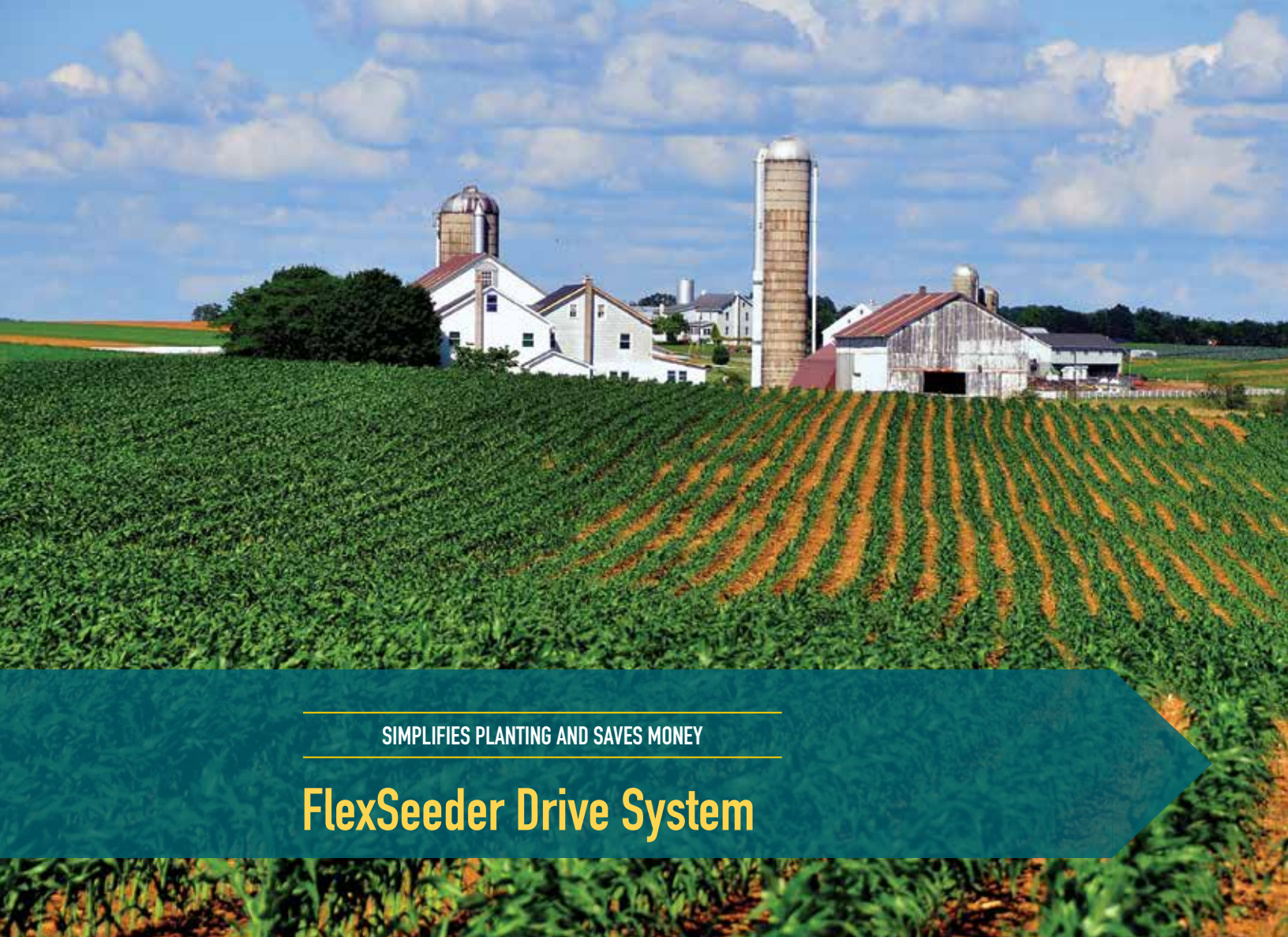
Fast, simple installation and a lifetime of performance

Elliott's GroundControl II system incorporates your existing toolbar gearbox and flexshaft to quickly lock into place. The ergonomic knob design makes changeover easy.

Elliott's proprietary knob is reinforced with self-locking set screws to optimize durability. Your original plastic knob features spring fingers that snap into the seed meter shaft and can easily break. Our interface is reinforced aluminum.

With Elliott's GroundControl II planter drive solution, you can easily replace your RowCommand system and reap immediate results.





SIMPLIFIES PLANTING AND SAVES MONEY

FlexSeeder Drive System

FlexSeeder easily upgrades existing planting systems with state-of-the-art drive technology.

Elliott's FlexSeeder system transfers rotary power through gear boxes to sequence seed delivery in one application, offering a smart replacement for high-maintenance chain and sprocket drives. The fully sealed flexible shaft requires no servicing and gives you an economical, reliable solution.

Elliott Manufacturing FlexSeeder System

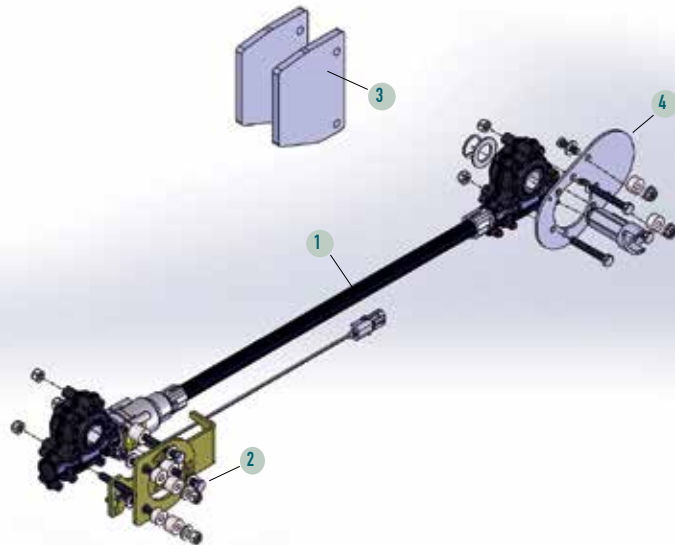
- Available with or without a clutch for individual row control
- Easy to install, allowing you to get working quickly
- Reduces skips and doubles to eliminate overplanting in headlands and point rows
- Delivers increased yields and substantial seed savings
- Completely sealed system is pressure washer friendly and IP66 compliant
- No lubrication or maintenance required
- No crop/chain disengagement or chain/sprocket alignment issues

A FlexSeeder solution from Elliott Manufacturing eliminates chains and sprockets to drive your original seed meter.



FlexSeeder Clutched Assembly

- 1 FLEXIBLE SHAFT ASSEMBLY, SANTOPRENE COVERED
- 2 TOOLBAR/CLUTCH BRACKETS AND HARDWARE
- 3 ROW UNIT STOP
- 4 SEED METER BRACKET, HEX DRIVE AND HARDWARE



John Deere | Planter Model: Varies | Description: Varies

Elliott PN	Planter Model	Description
14558-22SR-498	7000, 7100	FlexSeeder - w/Clutch
14558-22SR-1458	7000, 7100	FlexSeeder - w/Clutch
14559-23SR-532	7200, 7300, 1700	FlexSeeder - w/Clutch for Mechanical System
14559-23SR-570	7200, 7300, 1700	FlexSeeder - w/Clutch for Vacuum System
14570-22SR-498	7000, 7100	FlexSeeder - w/o Clutch
14571-23SR-532	7200, 7300, 1700	FlexSeeder - w/o Clutch for Mechanical System
14571-23SR-570	7200, 7300, 1700	FlexSeeder - w/o Clutch for Vacuum System

Kinze® | Planter Model: 3000 | Description: Varies

Elliott PN	Description
14560-22SR-498	FlexSeeder - for Kinze 3000 Mechanical w/Clutch
14560-22SR-548	FlexSeeder - for Kinze 3000 Vacuum w/Clutch
14560-22SR-600	FlexSeeder - for Kinze 3000 Mechanical Setback Row w/Clutch
14572-22SR-498	FlexSeeder - for Kinze 3000 Mechanical w/o Clutch
14572-22SR-548	FlexSeeder - for Kinze 3000 Vacuum w/o Clutch

A FlexSeeder drive system allows you to make an easy upgrade that can pay for itself in one season.



1879

Flexible shafts invented and
patented by Nelson Stow



1932

Elliott Manufacturing Co.
founded by W.W. Elliott



1993

Acquisition of Stow Manufacturing



1999–2004

Strategic acquisitions
of G&H Technology,
Arens Controls & Key Components



2004–present

Elliott becomes a proud member
of CentroMotion, leveraging its tradition
of growth and innovation.



elliott manufacturing

Elliott Global Locations

BINGHAMTON, NY
JUAREZ, MEXICO

AgExpress Electronics Locations

PHONE: 515-446-3400
EMAIL: SALES@AGEXPRESS.COM

INDIANA
106 W Main, PO Box 28
Sulphur Springs, IN
765-533-4809

IOWA
6280 NE 14th St.
Des Moines, IA
515-289-2746

NEBRASKA
308 Claude Road
Grand Island, NE
308-381-2905

About Elliott Manufacturing

Elliott Manufacturing is a worldwide leader in flexible shaft systems that safely and efficiently transmit rotational power. Founded in 1932, our product portfolio has evolved to include flexible shaft assemblies, casings and push-pull control assemblies. Over the years, our engineering expertise, thoughtful investments in research and development, and ongoing commitment to best-in-class manufacturing have placed us at the forefront of our industry.

Look for Elliott's versatile and innovative transmission technology in the most challenging and rugged environments around the globe, in a diverse range of industries, including:

- Aerospace
- Agriculture
- Construction
- Defense
- Industrial
- Marine
- Medical
- Outdoor Power Equipment
- Power Gen

The Elliott product portfolio has evolved to include flexible shaft assemblies, flexible couplings, gearboxes, clutches, push-pull control assemblies and valve actuation systems.

Elliott Manufacturing is part of the CentroMotion™ family of brands. CentroMotion businesses are leaders in a broad array of niche markets that utilize highly engineered position and motion control systems and operator-machine interface solutions. Our headquarters are located in southeastern Wisconsin.

To place an order, contact AgExpress Electronics, Elliott's exclusive North American distributor for these products, by phone at 515-446-3400 or by email at sales@agexpress.com.

AG-EXPRESS
ELECTRONICS
100% Employee Owned



elliottmfg.com



Scan the QR code to learn
more about our products.



elliott manufacturing

© Elliott Manufacturing 2023 | All rights reserved. EM0101001-0223